

Protected Area Planning on Haida Gwaii

Welcome! The purpose of this open house is for the Council of the Haida Nation and the Province of British Columbia to report the progress of Protected Area planning and Detailed Strategic Planning to the public of Haida Gwaii. This summary is focused on Protected Area Planning.

STRATEGIC LAND USE PLANNING

Land Use Planning started on Haida Gwaii back in the fall of 2003, when the CHN and the Province began a process to engage communities and interest-holders on Haida Gwaii. A 'Community Planning Forum' made up of 29 participants identified the wants and needs of communities, government, organization and businesses. In 2004, at the Community Planning Forum, the CHN presented the Haida Land Use Vision. This document was adopted by the Forum and became the foundation for the Strategic Land Use Agreement.

In December 2007, the Council of the Haida Nation and the Province of BC signed a Strategic Land Use Agreement (SLUA) for Haida Gwaii. The Agreement conserves some of the Haida's most important ecological, cultural and spiritual areas. The Agreement also prompted the creation of a Joint Management Team and two Joint Technical Teams which were formed to implement the management objectives in the Agreement.

PROTECTED AREA PLANNING

Between mid-2008 and December 2009, a series of initiatives are being undertaken to complete a management plan for all the newly designated Provincial conservancies (Haida Heritage Sites). These tasks include: the completion of a collaborative management agreement between the Haida Nation and the Province; final legal designations of terrestrial boundaries; legal designations for their adjacent nearshore/foreshore boundaries; plans for tenure management; interim allowable use policy, and finally a long-term management plan.

Collaborative Management is a process by which both the Council of the Haida Nation and the Province will co-operatively govern these heritage sites /conservancies. This includes the collective determination for everything from geographic boundaries to allowable use policy. Agreement on this process is very near completion.

Terrestrial Boundaries are the boundaries of the heritage sites/conservancies that are legally recognized through either an Order in Council or through the Parks Act legislation. Private lands, mineral tenures and road corridors within these areas that are not included as part of the conservancies are

identified. An Order in Council was signed on December 17th 2008 by Cabinet that effectively completes this task.

Nearshore/Foreshore boundary identification is a process to establish the conservancy boundaries adjacent to the marine environments. In this case, boundaries will be influenced by things like rare/sensitive marine ecosystems (such as eelgrass estuaries) or important sites for Haida cultural use.

Tenure management : As new Conservancy Areas are designated, the administration of most Crown land tenures will be transferred to Ministry of Environment. The agreement, therefore, contemplates a regime of tenure management that involves multiple agencies within a protected area unit. Planning for the associated issues and concerns is underway, and a process to address these will be developed. Outcomes from this process will inform future management plan development.

Interim management plan: This plan will provide basic protected area operation guidelines and guiding principles. The guiding principles are intended to provide assurance that in the development of plans social, economic and environmental values will be considered and existing interests in the area are fairly dealt with. This includes direction on the overall management intent for each protected area and a list of activities considered as acceptable, potentially acceptable or unacceptable and pre-existing uses that will guide management prior to the development of a full management plan. This will help ensure that basic use and low impact economic opportunities may be permitted prior to completion and implementation of a final detailed management plan.

Detailed Management Plan: A detailed management plan(s) will guide management of the Conservancy Areas over the next ten to twenty years. The plan will establish objectives and strategies for conservation, development, interpretation and protected area operations. A management plan relies on current information relating to such subjects as natural values, cultural values, and recreation opportunities within a protected area and resource activities occurring on surrounding lands. Management planning will involve an analysis of the overall goals of the protected area, use patterns, management objectives, and possible sources of conflict. Through the planning process, various options for managing the protected area will be developed and assessed, in order to reach a balance between protecting natural values from damage and managing human uses of the protected area.

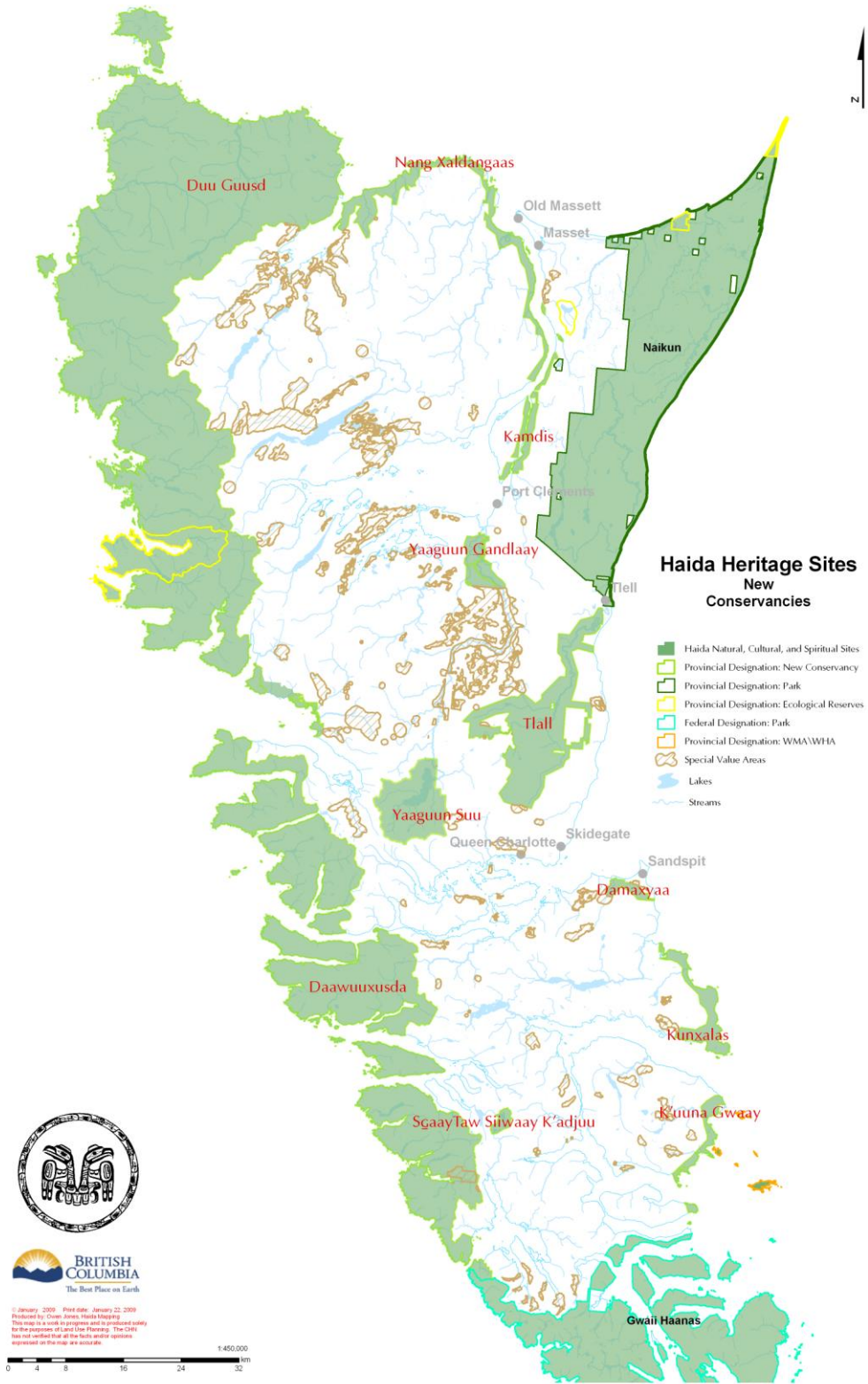


Thank you for your interest and for coming out! Other open houses will be held in June 2009.

For more information please contact:
Bill Beldessi at
250-626-5252

Council of the Haida Nation
Website
www.haidanation.ca

Province of BC
<http://ilmbwww.gov.bc.ca/p/lrmp/nanaimo/qci/>



BRITISH COLUMBIA
The Best Place on Earth

© January 2009. Print date: January 22, 2009
Produced by: Owen Jones, Haida Mapping
This map is made in progress and is produced solely for the purposes of Land Use Planning. The CHN has not verified that all the facts and/or opinions expressed on this map are accurate.



BRITISH COLUMBIA
The Best Place on Earth